



Characteristics

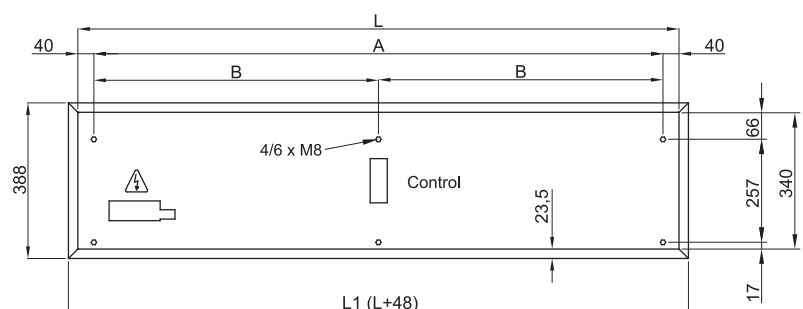
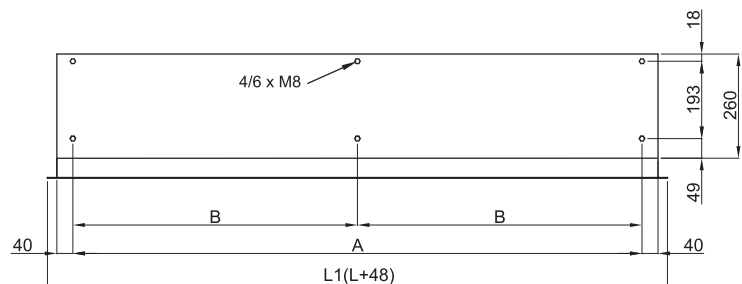
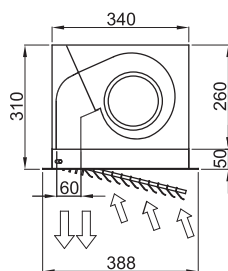


- Compact and low profile air only recessed air curtain, with full grille view, specially designed for applications without heating.
- Self-supporting casing construction made of galvanized steel plate, ready to be installed recessed in a false ceiling.
- Inlet grille (free of maintenance) made with aluminium profiles and blow-out nozzle, integrated in a single white frame colour RAL 9016. Other colours are available on request.
- Anodized aluminium outlet vanes, airfoil shaped, adjustable in both directions.
- Double-inlet centrifugal fans driven by an external rotor motor and low noise level. 5-speed selector. "EC" models assembled with very low consumption efficiency fans.
- "A" type without heating, air only.
- Includes Plug&Play control with 7m RJ45 cable and infrared remote control. Optional: Clever control (programmable, automatic, intelligent, energy saving, Modbus RTU for BMS...).

Specifications

| AIR ONLY | | | | | |
|---------------|------------------------------|----------------------------------|-----------------------------------|----------------------------------|--------------|
| Model | Airflow m ³ /h | Power Fans 230V-50Hz kW | Current Fans 230V-50Hz A | Noise Level (5 m) dB(A) | Weight kg |
| RC M 1000 A | 1800 | 0,212 | 0,94 | 55 | 33 |
| RC M 1500 A | 2700 | 0,318 | 1,41 | 56 | 50 |
| RC M 2000 A | 3600 | 0,424 | 1,88 | 57 | 61 |
| RC M 2500 A | 4500 | 0,530 | 2,35 | 58 | 68 |
| RC ECM 1000 A | 1840 | 0,132 | 1,14 | 56 | 33 |
| RC ECM 1500 A | 2760 | 0,198 | 1,71 | 57 | 50 |
| RC ECM 2000 A | 3680 | 0,264 | 2,28 | 58 | 61 |
| RC ECM 2500 A | 4600 | 0,330 | 2,85 | 59 | 68 |
| RC G 1000 A | 2400 | 0,642 | 2,85 | 57 | 37 |
| RC G 1500 A | 3200 | 0,856 | 3,80 | 58 | 55 |
| RC G 2000 A | 4800 | 1,284 | 5,70 | 59 | 71 |
| RC G 2500 A | 5600 | 1,498 | 6,65 | 60 | 78 |
| RC ECG 1000 A | 2700 | 0,225 | 1,95 | 61 | 37 |
| RC ECG 1500 A | 3600 | 0,300 | 2,60 | 62 | 56 |
| RC ECG 2000 A | 5400 | 0,450 | 3,90 | 63 | 71 |
| RC ECG 2500 A | 6300 | 0,525 | 4,55 | 64 | 78 |

Dimensions



| | L | L1 | A | B |
|---------|------|------|------|------|
| RC 1000 | 1000 | 1048 | 920 | - |
| RC 1500 | 1500 | 1548 | 1420 | 710 |
| RC 2000 | 2000 | 2048 | 1920 | 960 |
| RC 2500 | 2500 | 2548 | 2420 | 1210 |